

2. PB Cycle

Steps toward PB in Municipalities

How to get started?

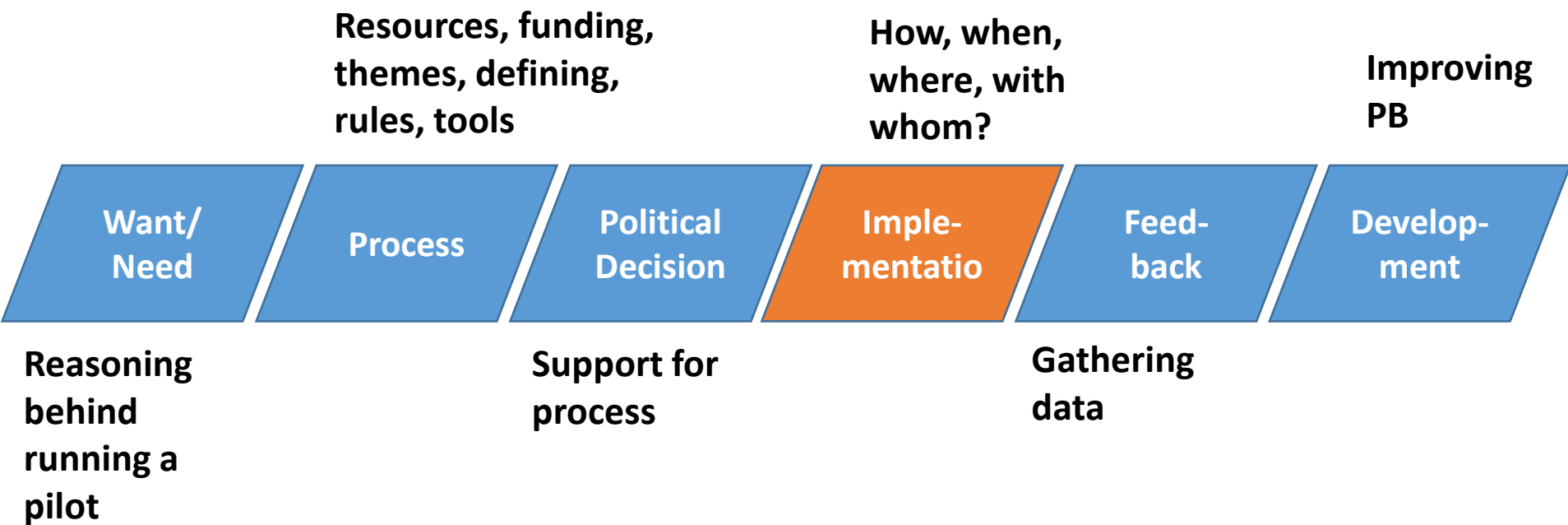
[Experiences from Finland]

PP18 TAMPERE UNIVERSITY

PP19 LAB UNIVERSITY OF APPLIED SCIENCES

13 October 2020

PB Pilot Process



PB in Finland 2020

- PB is very “In” in Finland at the moment: there are implementations running in large cities, small towns and everything in between such as Helsinki, Tampere, Turku, Vantaa, Oulu, Tuusula, Nurmijärvi, Hyvinkää, Kangasala, Loppi, Hämeenlinna, Inari, Janakkala and EmPaci pilots Lahti and Riihimäki
 - Budgets range from a few thousand EUR to 8,8 MEUR pledged by the capital city Helsinki for every other year
 - Budget for Lahti and Riihimäki was 100 000 € each
- 

Choosing a Theme for PB

Examples of PB Themes:

- **No special theme:** Citizens can freely propose ideas. However budget, legislation and municipality's authority may set limits to proposals.
- **Special theme or themes:** There is special theme (s) for PB (e.g. environmental or cultural issues). Proposals have to fit into this theme. Budget, legislation and municipality's authority may set limits to proposals.
- **Prepared proposals:** Municipality gives loose proposals from which citizens can choose.
- **Special target group(s):** PB is indicated to issues that concern certain citizen groups (e.g. children, old people, disabled).
- **Special region/city district:** PB is focused to certain city district.

The budget defines, which of these options (if any) is suitable for the municipality. If the budget or other resources are small, some framing is sensible. Or if the aim is to pay attention to special socio-economical issues or some hard-to-reach groups, it is sensible to frame the target group or for example the city district.

Choosing the theme carefully is important, because it influences on the amount of proposals and the voting turnout. One option is to discuss about the themes with the citizens before decide anything. The themes can be co-created.

Pilot 1. Lahti

Osallistuva budjetointi Lahdessa – ideoi, kehitä, äänestä!

Miten sinä haluaisit kehittää omaa asuinalueitasi tai koko kaupunkia?

Tule mukaan ideoimaan ja päättämään kunnasta, jotta kaupunki toimittaisi Lahdessa 2020–2023. Kunnantalonuden tuloa löydät kunnasta, yhteistyöryhmien, yrittäjien tai ikäryhmien ja niiden tuloa siltä kaupungin toimittamien palveluista. Kunnantalonudettiin on 100 000 euroa vuodelle 2020 ja se jaetaan neljään yhtä suureen osaan: palveluista, eläkeläisiltä ja nuorisilta alueilla sekä koko kaupungin kunnasta kunnasta.

Anna äänesi ja ideoi!

Joka ilta klo 20.4–22.0, viikkokokouksissa osallistuu **Lahti.fi/vuok**.
Kaupungin toimintatilan avoimet tilaisuudet. Tilaisuuksissa sinulla on mahdollisuus
yhteistyöryhmien kanssa. Tilaisuuksien ideat lähetetään sähköpostilla, jossa kaikki
lähettävät palautteet kunnasta. Tällä tavalla saamme kunnasta ideoita Lahden kaupunki.

Kokoukset kunnantalon ja läheisten
kokoontumisen kullekin 30 henkilä
ihmiselle kaupungin kunnasta
palveluista. Lahti.fi ja joko ilta
20.4.–22.5. osallistuu **Lahti.fi/vuok**

LISÄTIETOJA
Ja kunnantalon S. p. 044 700 8009
oma osallistuminen S. p. 044 882 8200

Ilmaa Lahteen. Anna äänesi ja ideoi.

Lahti.fi/vuok
Asuinalueiden Vuokko Asuunotus Lahti

#OmaLahti
Ideoi. Kehitä. Äänestä.

LAHTI



Background on “Why to try PB in Lahti”?

- To follow statute of the law (Municipal Act in Finland)
- To strengthen the well-being of inhabitants (citizen as an active actor, not a passive service-user)
- To build more open, transparent and participatory culture in municipal organizations
- To create new ideas
- To build new connections to inhabitants
- To strengthen the understanding of inhabitants on how and why municipal funds are spent
- To find solutions to things the questions/themes of PB
- To change the way projects are done in Lahti
- To do something fun with inhabitants and stakeholders
- To find new places for making savings together with inhabitants

Example of Local PB Rules

OmaLahti, Lahti

Ideas/proposals must:

- Be made in accordance with rules, regulations and the law
- Fall under city jurisdiction
- Be in line with the give themes
- Be implemented with the max. amount of funds allocated for set PB/Area/Theme. (Can also be considered as partial funding for a larger project)
- Not have long-term financial impacts for the city (no permanent staff, large maintenance costs)
- Be non-commercial
- Be non-discriminatory and promote equality
- Be possible to be implemented by the City in 2020 - 2021

Source:

<https://www.lahti.fi/paatoksenteko/osallistujavaikuta/osallistuva-budjetointi>

2.Finnish Examples:

Lahti PB Pilot 2020, steps

Lahti PB-team= 2,5 people supported by communications and other division on a need-basis. An internal steering group

1. **Idea creation** by inhabitants (spring)
 - Four themes, three from City (wellbeing, community and environment) and one (Sports) from inhabitants
 - Four areas – Northern, Southern and Eastern as well as entire city, 25 000 € each
2. **Pre-Check** by City (summer)
3. **Co-Creation** by City and inhabitants (summer/fall)
 - At a special co-creation Lackathon event arranged 13.8.2020 at Palvelutori -service point
4. **Voting** open to all inhabitants (fall)
 - 3896 inhabitants voted, and 10 ideas were chosen for implementation.
5. **Implementation** by the City (fall--- 2021)

Specialty:

Project Guardians – volunteer inhabitants supporting the pilot externally in their areas

PB Coaches -chosen individuals from the City organization supporting the pilot internally within the city divisions

Libraries supported process

No specific PB-platform in place – existing programs used to run pilot



Picture: The City of Lahti

Source:

<https://www.lahti.fi/paatokseteko/osallistujavaikut/a/osallistuva-budjetointi> & Tia Mäkinen and Sanna Virta, PB Team at the City of Lahti

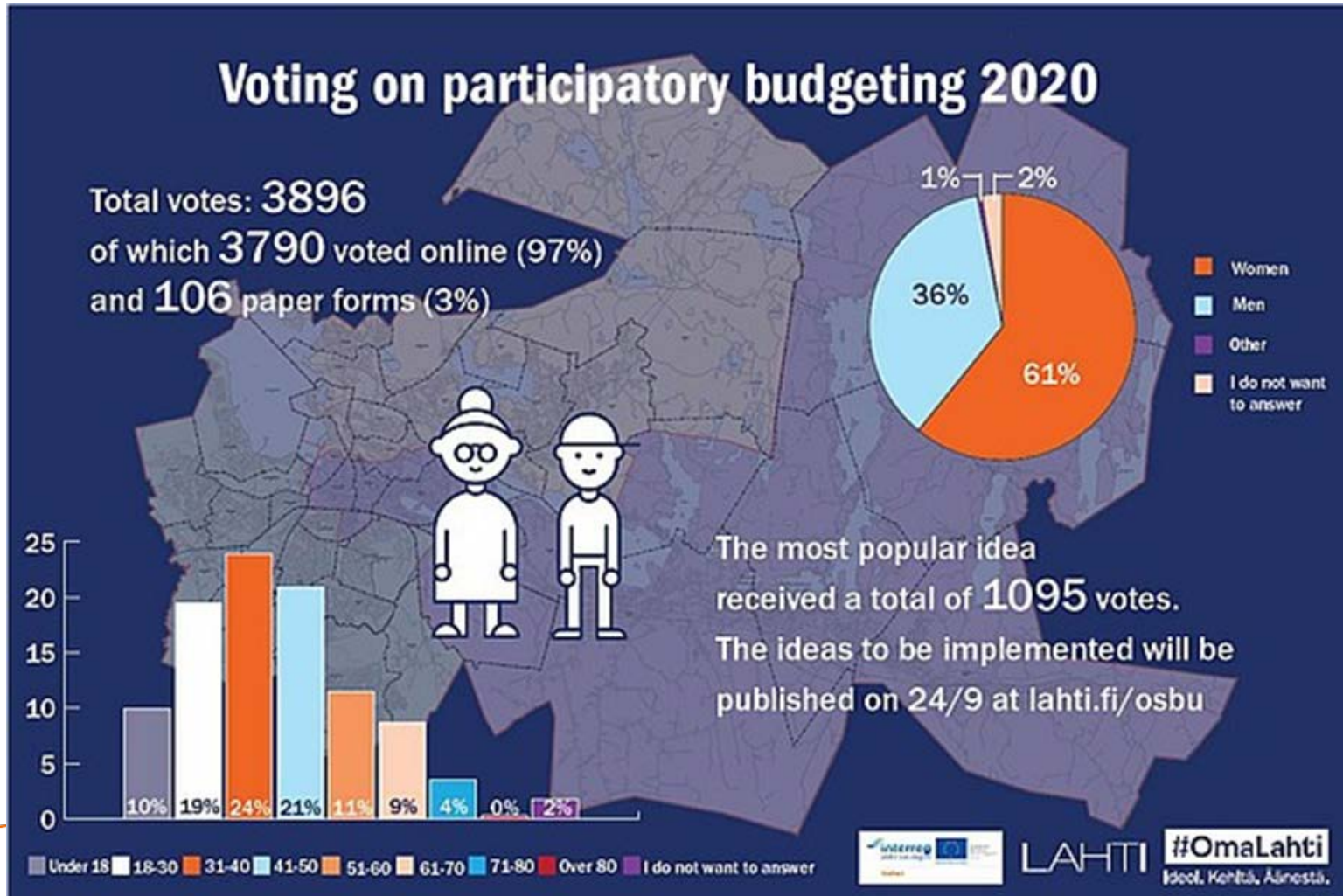
Co-Creation

A Lackathon Event

- The City of Lahti and EmPaci arranged an open co-creation event in August
- The aim was to bring citizens, city employees and other stakeholders such as NGOs together to work on some 14 ideas that were given in the Idea Creation Stage
- Each idea/theme had their own service point where the city had provided pictures, maps etc. to showcase the ideas and help the co-creation along
- Among the ideas were improvements for recreational areas, street art and a food bank -idea.
- The co-created ideas moved on to the voting stage.



Results of the OmaLahti PB-pilot



The Results of the OmaLahti PB-pilot

To be implemented in 2021

The ideas to be implemented for the total of 100 000 €, 25 000 €/each area

Northern area:

Frisbee golf track to Ahtiala

Eastern area:

Livening up the market square in Lahti

Setting up guarded bike parking at the market square

Street art to the Lahti centre

Flowers to the Lahti centre

A food distribution point for the Nastola area

Southern area:

Developing the nature path at the Porvoo river region

Developing the Sopenkorpi kesanto area (an outdoor area with events)

Bringing a Wibit-track to the outdoor pool in Lahti

Entire city:

Setting up a cherry tree park (the most voted on idea in the pilot)

Pilot 2. Riihimäki

- The aim of the PB is to inspire citizens to give ideas and vote on them thus making Riihimäki a better place to live.
- Riihimäki has a fund of 1 Million EUR in place for PB, 50 000 € of which was spent in the first ever PB in 2019.

[Rekisteröidy](#) [Kirjaudu sisään](#)[Etusivu](#)[Osallistu](#)[Tietoa](#)A large, diverse crowd of people is gathered outdoors, many holding Finnish flags. The scene is bright and festive, suggesting a public event or festival.

RIIHIMÄKI TEHDÄÄN YHDESSÄ

[OSALLISTU](#)

Example of Local PB Rules

Riihimäki

Ideas/proposals must:

- Fall under city jurisdiction
- Be in line with city strategy and values
- Produce joy for a maximum number of citizens
- Be in the public interest

Source:

<https://www.lahti.fi/paatoksenteko/osallistujavaikuta/osallistuva-budjetointi>

2.Finnish Examples:

Riihimäki PB pilot, round 2, 2020-2021

Riihimäki PB-team= 1,5 people supported by communications and other divisions on a need-basis. An internal steering group.

1. **Idea creation** by inhabitants (Fall)
 - A general theme of ideas bringing wellbeing to Riihimäki inhabitants. Everyone from Riihimäki can take part.
2. **Pre-Check** by City (Fall)
 - 24/45 ideas moved into this phase
 - Those that have left ideas will be asked to participate in co-creation as well as implementation
3. **Voting** open to all inhabitants over 12 (Fall)
 - Done using the platform
4. **Implementation** by the City (Winter/2021)

Specialty:

A Web-based platform in use for gathering ideas and voting on them:

<https://osallistu.riihimaki.fi/processes/osbu-2020/f/4/?locale=fi>

Libraries also assist in participating

In order to move through to the pre-check phase, an idea needs to get 10 Likes on the platform

www.empaci.eu

www.lab.fi/empaci

ANNUKKA HEINONEN, LAB-UNIVERSITY OF APPLIED SCIENCES
SEESAM TSOKKINEN, LAB-UNIVERSITY OF APPLIED SCIENCES

LOTTA-MARIA SINERVO, TAMPERE UNIVERSITY
KAISA KURKELA, TAMPERE UNIVERSITY
MERI PULKKINEN, TAMPERE UNIVERSITY